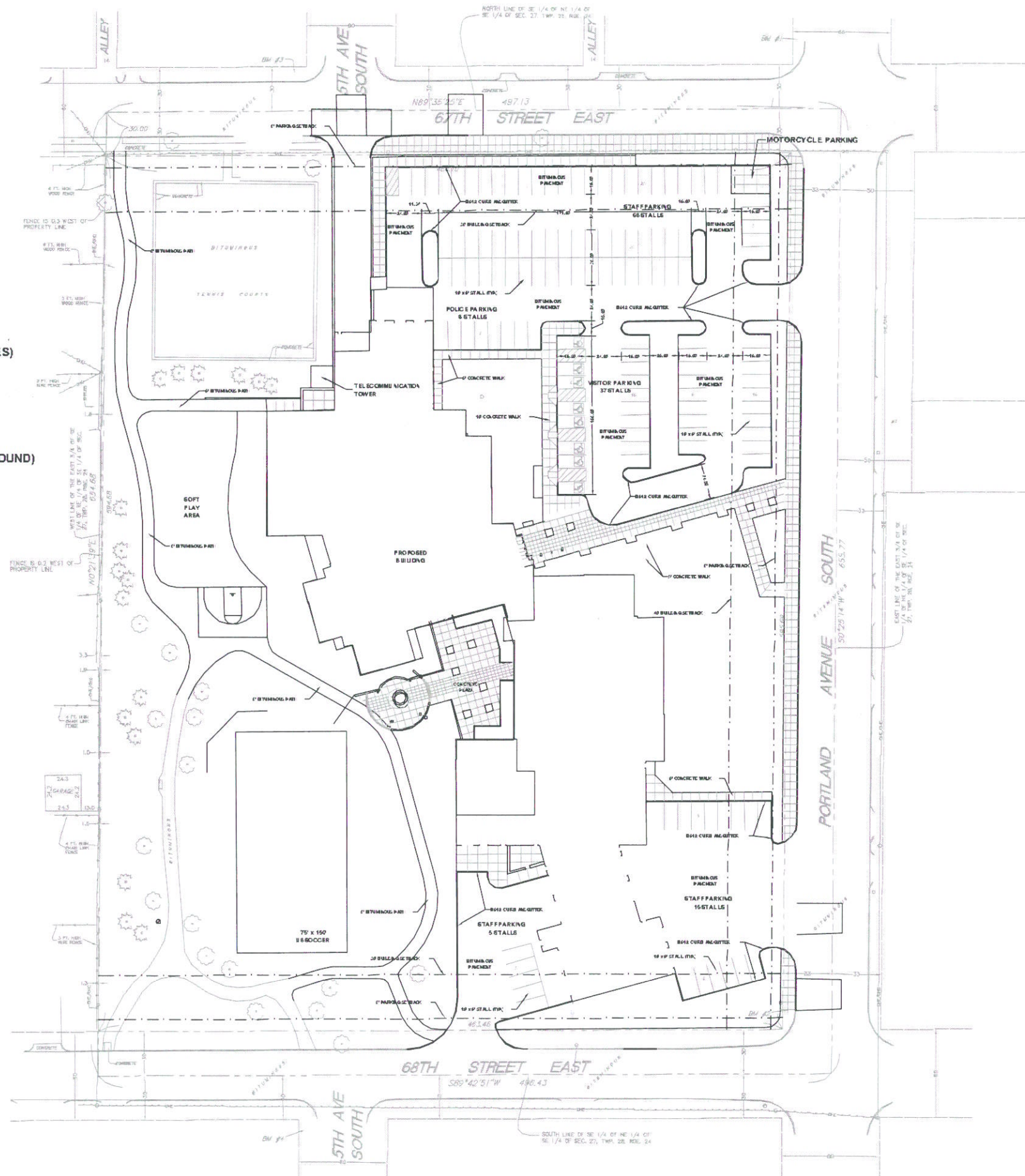


SITE STATISTICS

- EXISTING HARD SURFACE AREA = 3.31 ACRES (52% OF SITE)
- PROPOSED HARD SURFACE AREA = 3.69 ACRES (58% OF SITE : ADDITIONAL 0.38 ACRES)
 - BUILDING = 1.20 ACRES (19% OF SITE)
 - PARKING LOTS, DRIVES, WALKS, ETC. = 2.49 ACRES (39% OF SITE)
 - % OF PARKING LOTS TO BE LANDSCAPE ISLANDS = 5.1%
- EXISTING PARKING STALLS = 147 (INCLUDES 6 ACCESSIBLE STALLS)
- PROPOSED PARKING STALLS = 162 (INCLUDES 7 ACCESSIBLE STALLS & 29 UNDERGROUND)
- SITE ACREAGE = 6.34 ACRES

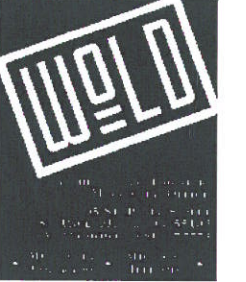


Discipline	Level	Quadrant	Layer
A			
F			
S			
M			
E			

NEW CITY HALL, POLICE AND FIRE

6700 Portland Avenue South
Richfield, MN 55423

City of Richfield
6700 Portland Avenue South
Richfield, MN 55423



ANDERSON, JOHNSON
ASSOCIATES,
INC.

ARCHITECTS

LANDSCAPE ARCHITECTS

PLANNERS

ENGINEERS

CONSTRUCTORS

MANUFACTURERS

DEVELOPERS

OPERATORS

MAINTENANCE

REPAIRS

RENOVATIONS

RESTORATION

RECONSTRUCTION

REDEMPTION

REDEVELOPMENT

REDESIGN

REPAIRS

RENOVATIONS

RECONSTRUCTION

REDEMPTION

REDEVELOPMENT

REDESIGN

REPAIRS

RENOVATIONS

RECONSTRUCTION

REDEMPTION

REDEVELOPMENT

REDESIGN

REPAIRS

RENOVATIONS

RECONSTRUCTION

REDEMPTION

REDEVELOPMENT

REDESIGN

REPAIRS

RENOVATIONS

RECONSTRUCTION

REDEMPTION

REDEVELOPMENT

REDESIGN

REPAIRS

RENOVATIONS

RECONSTRUCTION

REDEMPTION

REDEVELOPMENT

REDESIGN

REPAIRS

RENOVATIONS

RECONSTRUCTION

REDEMPTION

REDEVELOPMENT

REDESIGN

REPAIRS

RENOVATIONS

RECONSTRUCTION

REDEMPTION

REDEVELOPMENT

REDESIGN

REPAIRS

RENOVATIONS

RECONSTRUCTION

REDEMPTION

REDEVELOPMENT

REDESIGN

REPAIRS

RENOVATIONS

RECONSTRUCTION

REDEMPTION

REDEVELOPMENT

REDESIGN

REPAIRS

RENOVATIONS

RECONSTRUCTION

REDEMPTION

REDEVELOPMENT

REDESIGN

REPAIRS

RENOVATIONS

RECONSTRUCTION

REDEMPTION

REDEVELOPMENT

REDESIGN

REPAIRS

RENOVATIONS

RECONSTRUCTION

REDEMPTION

REDEVELOPMENT

REDESIGN

REPAIRS

RENOVATIONS

RECONSTRUCTION

REDEMPTION

REDEVELOPMENT

REDESIGN

REPAIRS

RENOVATIONS

RECONSTRUCTION

REDEMPTION

REDEVELOPMENT

REDESIGN

REPAIRS

RENOVATIONS

RECONSTRUCTION

REDEMPTION

REDEVELOPMENT

REDESIGN

REPAIRS

RENOVATIONS

RECONSTRUCTION

REDEMPTION

REDEVELOPMENT

REDESIGN

REPAIRS

RENOVATIONS

RECONSTRUCTION

REDEMPTION

REDEVELOPMENT

REDESIGN

REPAIRS

RENOVATIONS

RECONSTRUCTION

REDEMPTION

REDEVELOPMENT

REDESIGN

REPAIRS

RENOVATIONS

RECONSTRUCTION

REDEMPTION

REDEVELOPMENT

REDESIGN

REPAIRS

RENOVATIONS

RECONSTRUCTION

REDEMPTION

REDEVELOPMENT

REDESIGN

REPAIRS

RENOVATIONS

RECONSTRUCTION

REDEMPTION

REDEVELOPMENT

REDESIGN

REPAIRS

RENOVATIONS

RECONSTRUCTION

REDEMPTION

REDEVELOPMENT

REDESIGN

REPAIRS

RENOVATIONS

RECONSTRUCTION

REDEMPTION

REDEVELOPMENT

REDESIGN

REPAIRS

RENOVATIONS

RECONSTRUCTION

REDEMPTION

REDEVELOPMENT

REDESIGN

REPAIRS

RENOVATIONS

RECONSTRUCTION

REDEMPTION

REDEVELOPMENT

REDESIGN

REPAIRS

RENOVATIONS

RECONSTRUCTION

REDEMPTION

REDEVELOPMENT

REDESIGN

REPAIRS

RENOVATIONS

RECONSTRUCTION

REDEMPTION

REDEVELOPMENT

REDESIGN

REPAIRS

RENOVATIONS

RECONSTRUCTION

REDEMPTION

REDEVELOPMENT

REDESIGN

REPAIRS

RENOVATIONS

RECONSTRUCTION

REDEMPTION

REDEVELOPMENT

REDESIGN

REPAIRS

RENOVATIONS

RECONSTRUCTION

REDEMPTION

REDEVELOPMENT

REDESIGN

REPAIRS

RENOVATIONS

RECONSTRUCTION

REDEMPTION

REDEVELOPMENT

REDESIGN

REPAIRS

RENOVATIONS

RECONSTRUCTION

REDEMPTION

REDEVELOPMENT

REDESIGN

REPAIRS

RENOVATIONS

RECONSTRUCTION

REDEMPTION

REDEVELOPMENT

REDESIGN

REPAIRS

RENOVATIONS

RECONSTRUCTION

REDEMPTION

REDEVELOPMENT

REDESIGN

REPAIRS

RENOVATIONS

RECONSTRUCTION

REDEMPTION

REDEVELOPMENT

REDESIGN

REPAIRS

RENOVATIONS

RECONSTRUCTION

REDEMPTION

REDEVELOPMENT

REDESIGN

REPAIRS

RENOVATIONS

RECONSTRUCTION

REDEMPTION

REDEVELOPMENT

REDESIGN

REPAIRS

RENOVATIONS

RECONSTRUCTION

REDEMPTION

REDEVELOPMENT

REDESIGN

REPAIRS

RENOVATIONS

RECONSTRUCTION

REDEMPTION

REDEVELOPMENT

REDESIGN

REPAIRS

RENOVATIONS

RECONSTRUCTION

REDEMPTION

REDEVELOPMENT

REDESIGN

REPAIRS

RENOVATIONS

RECONSTRUCTION

REDEMPTION

REDEVELOPMENT

REDESIGN

REPAIRS

RENOVATIONS

RECONSTRUCTION

REDEMPTION

REDEVELOPMENT

REDESIGN

REPAIRS

RENOVATIONS

RECONSTRUCTION

REDEMPTION

REDEVELOPMENT

REDESIGN

REPAIRS

RENOVATIONS

RECONSTRUCTION

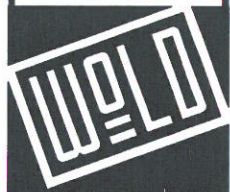
REDEMPTION

REDEVELOPMENT

REDESIGN

NEW CITY HALL,
POLICE AND FIRE
6700 Portland Avenue South
Richfield, MN 55423

City of Richfield
6700 Portland Avenue South
Richfield, MN 55423

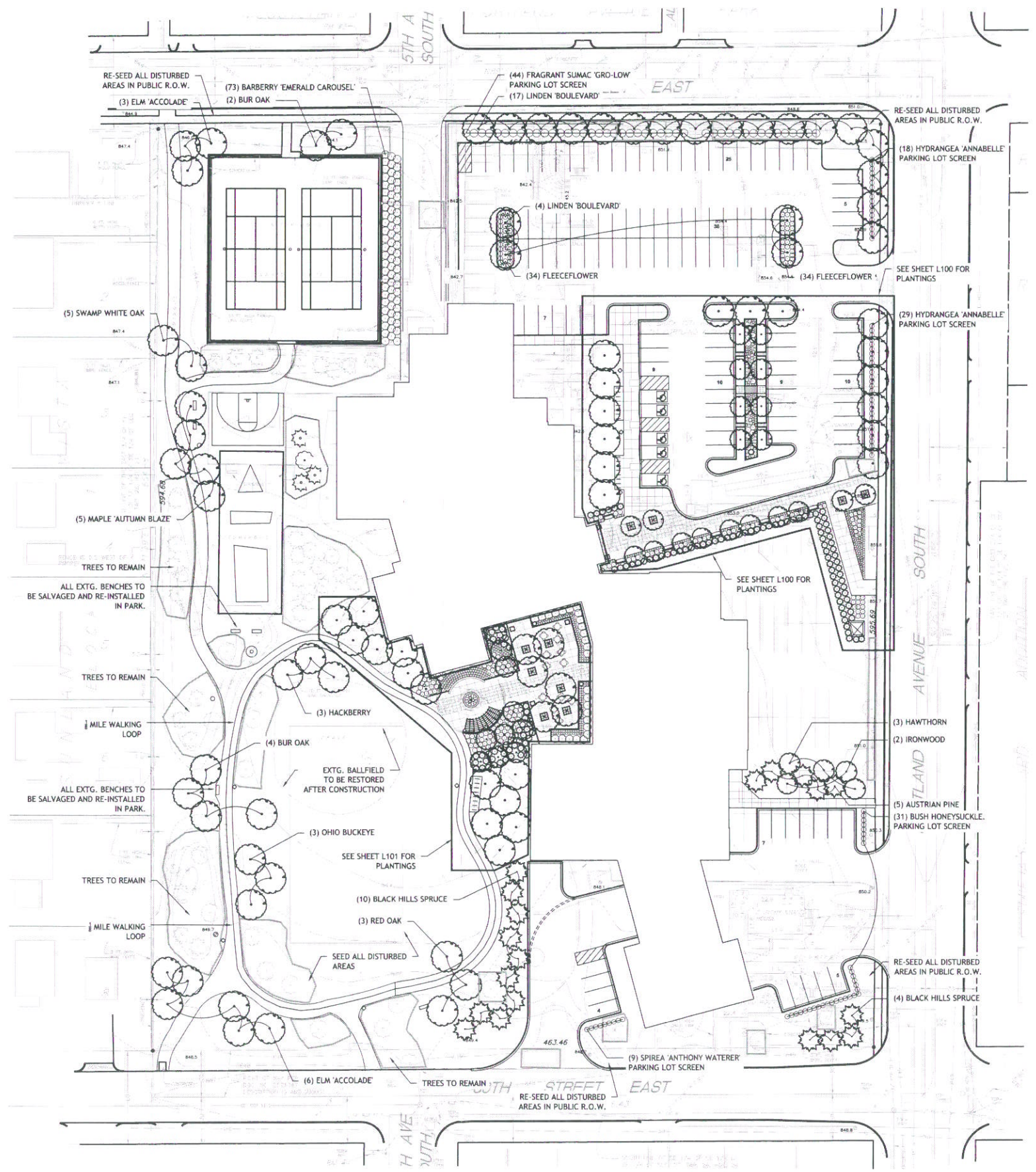
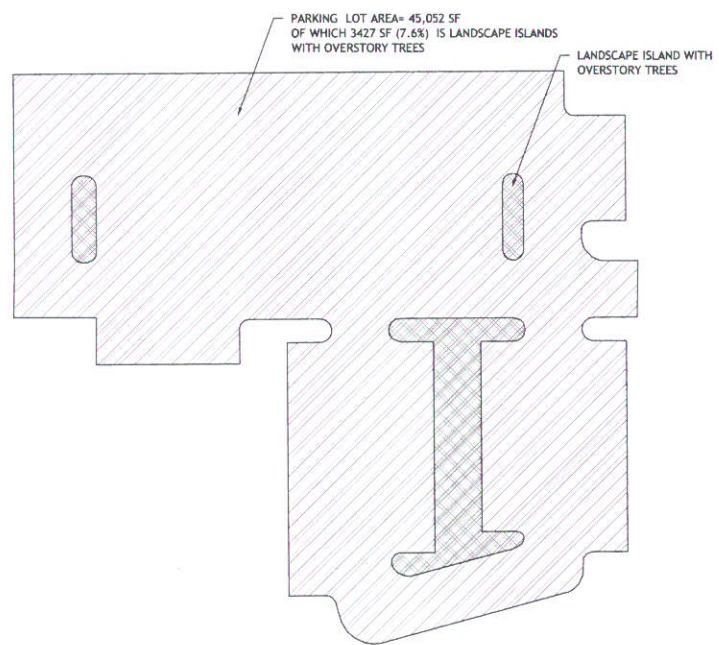


CLOSE
LANDSCAPE ARCHITECTURE +
400 1st Ave North Suite 528 Minneapolis, MN 55401
P 612.653.2990

DRAFT

Richfield City Hall Plant Schedule-sheet L102

Item	Qty	Common Name	Botanic Name	Size	Root
total # trees 127					
36		Linden 'Boulevard'	Tilia americana 'Boulevard'	2.5"	bb
12		Ironwood	Ostrya virginiana	2.5"	bb
3		Hawthorn	Crataegus crus-galli inermis	2.5"	bb
12		Sarcoberbery 'Autumn Brilliance'	Aamelancher laevis 'Autumn Brilliance'	2.5"	bb
52% total					
5		Swamp White Oak	Quercus bicolor	4.5"	bb
5		Maple 'Autumn Blaze'	Acer x faersmarii 'Jefferson'	4.5"	bb
6		Bur Oak	Quercus macrocarpa	4.5"	bb
8		River Birch	Betula nigra	3.5"	bb
6		Honeylocust 'Skyline'	Gleditsia triacanthos inermis 'Skyline'	3.5"	bb
3		Ohio Buckeye	Aesculus glabra	3.5"	bb
3		Hackberry	Celtis occidentalis	3.5"	bb
29% total					
13		Maple 'Fall Fiesta'	Acer saccharum 'Fall Fiesta'	4.5"	bb
9		Elm 'Accolade'	Ulmus japonica x wisoniana 'Mortor'	4.5"	bb
18% total					
EVERGREEN TREES					
5		Austrian Pine	Pinus nigra		
14		Spruce 'Black Hills'	Picea glauca 'Black Hills'		
DECIDUOUS SHRUBS					
5		Dogwood 'Red Gnome'	Cornus sericea 'Red Gnome'		
31		Dwarf Bush Honeysuckle	Lonicera japonica		
68		Fleeceflower	Polygonum cuspidatum compactum		
26		Fragrant Sumac 'Gro-Low'	Rhus aromatica 'Gro-Low'		
47		Hydrangea 'Annabelle'	Hydrangea arborescens 'Annabelle'		
38		Japanese White Spruce	Spiraea albilora		
9		Spiraea 'Anthony Waterer'	Spiraea x bumalda 'Anthony Waterer'		
73		Barberry 'Emerald Carousel'	Berberis thunbergii 'Emerald Carousel'		
14		Lilac 'Miss Kim'	Syringa reticulata 'Miss Kim'		
54		Blue Arctic Willow	Salix purpurea 'Nanum'		
38		Forsythia 'Gold Tide'	Forsythia x 'Gold Tide'		
EVERGREEN SHRUBS					
6		Juniper 'Grey Owl'	Juniperus virginiana 'Grey Owl'		
48		Taxus Yew	Taxus cuspidata		
PERENNIALS					
140		Feather Reed Grass 'Karl Foerster'	Calamagrostis acutiflora 'Karl Foerster'		
45		Switchgrass 'Shenandoah'	Panicum virgatum 'Shenandoah'		
119		Pennsylvania Sedge	Carex pennsylvanica		
160		Little Bluestem 'Blue Heaven'	Schizachyrium scoparium 'Blue Heaven'		
110		Tufted Hair Grass	Deschampsia x cespitosa 'Schottland'		
46		Golden Hakone Grass	Kakirochloa meyeri 'Aurea'		



1 OVERALL SITE PLANTING PLAN
1" = 30'-0"

Discipline	
Level	
Quadrant	
Layer	
A	
F	
S	
M	
E	

I hereby certify that this plan, specification or report was prepared by me or under my direct supervision and that I am a duly registered _____ under the laws of the State of _____

Expiration Number _____ Date _____

Revisions	Date	No.

Comm _____
Date _____
Drawn _____
Check _____

TREE LANDSCAPE PRESERVATION PLAN

Scale: _____

L102

